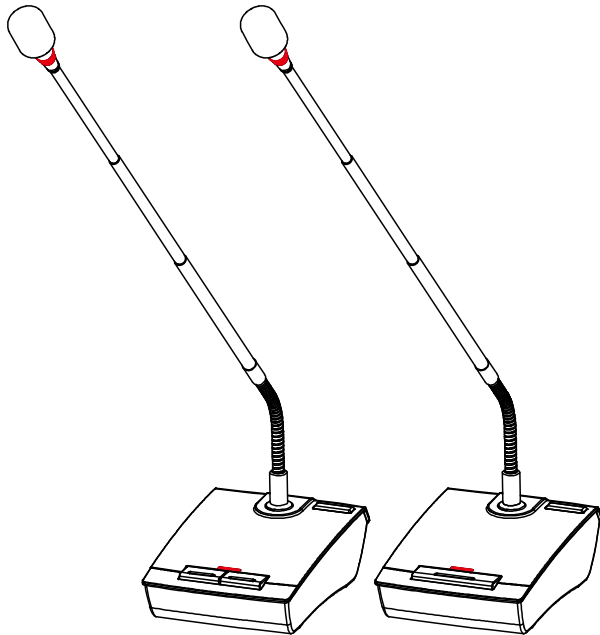


CHIAYO

Operation manual

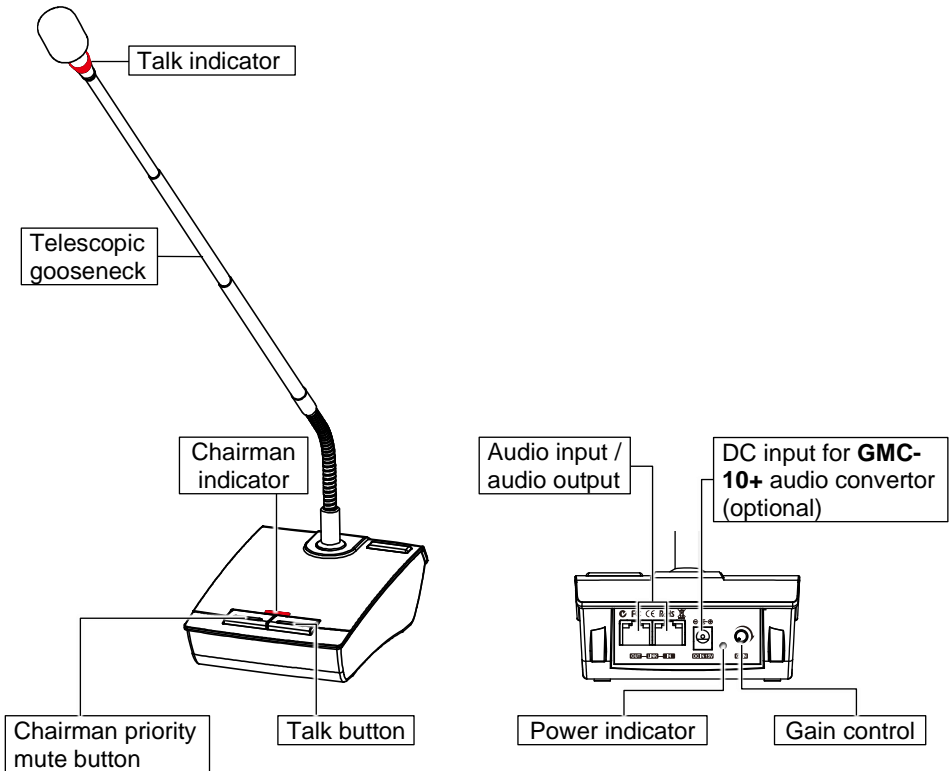
GM-243

Audio Linked Telescopic Gooseneck
Microphone

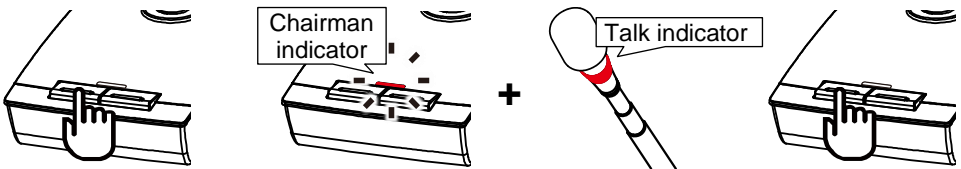


CHIAYO ELECTRONICS CO., LTD.

Parts and functions of GM-243C



TALK in chairman priority mode

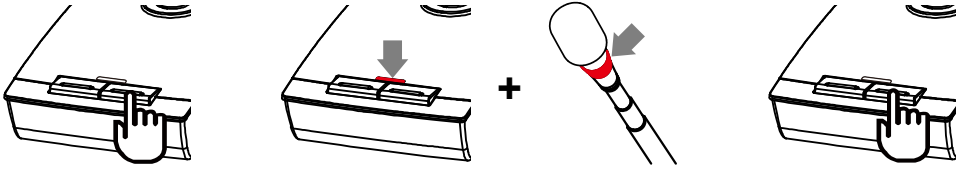


Press the chairman priority mute button (left).

- The chairman indicator (left) will flash and the talk indicator (right) will light solid.
- Only the chairman unit **GM-243C** can talk. All delegate units **GM-243S** are muted and unable to talk.

Press the chairman priority mute button (left) again to stop talking and enable delegate units **GM-243S** to talk.

TALK in normal mode

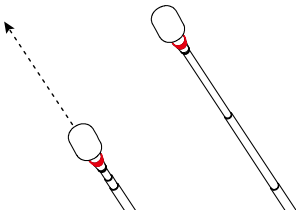


Press the talk button (right).

- Both chairman (left) and talk (right) indicators will light solid.
- The unit automatically mutes after 5 minutes without voice into the microphone (except chairman unit under priority mode.). Please press talk button again to continue.

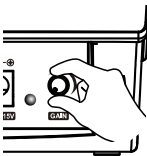
Press the talk button (right) again to stop talking.

Telescopic gooseneck



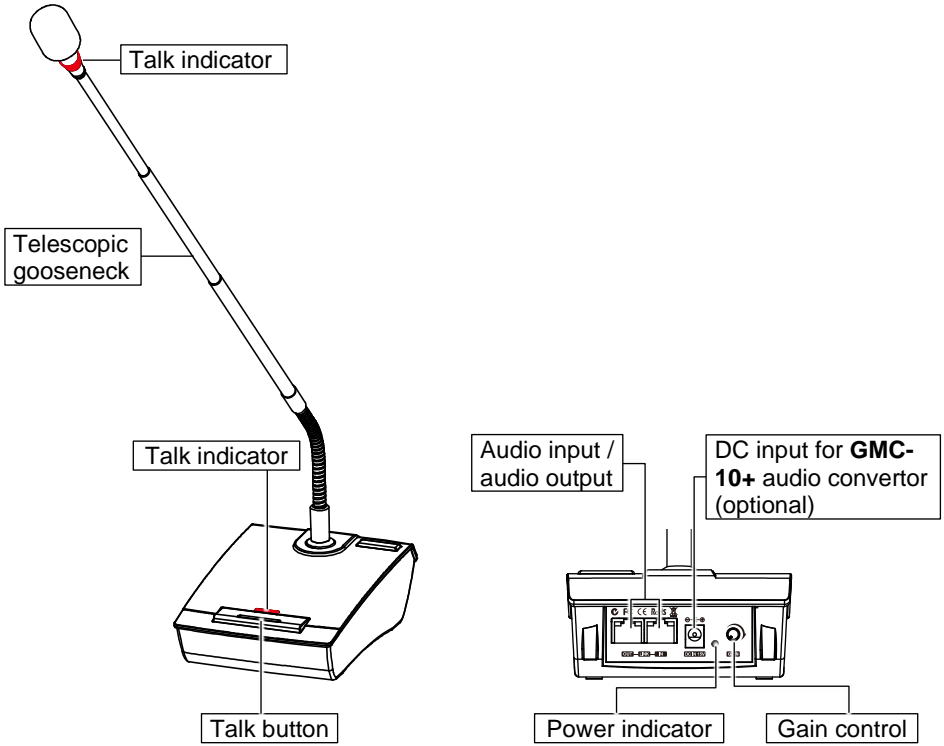
The gooseneck is telescopic from 43cm to 60cm for best voice pickup of the microphone.

Gain control

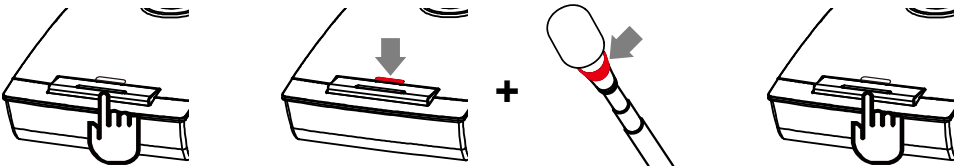


- Rotate to achieve best voice pickup sensitivity of the microphone.
- When feedback occurs because of the installing environment, the gain level adjustment can reduce its impact.
- For an ideal acoustic quality, either lower the gain level or the volume of the amplifier.

Parts and functions of GM-243S



TALK in normal mode

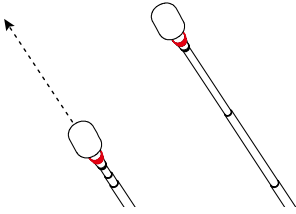


Press the talk button.

- The talk indicators will light solid.
- The unit automatically mutes after 5 minutes without voice into the microphone. Please press talk button again to continue.

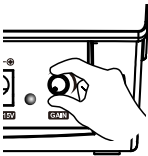
Press this button again to stop talking.

Telescopic gooseneck



The gooseneck is telescopic from 43cm to 60cm for best voice pickup of the microphone.

Gain control

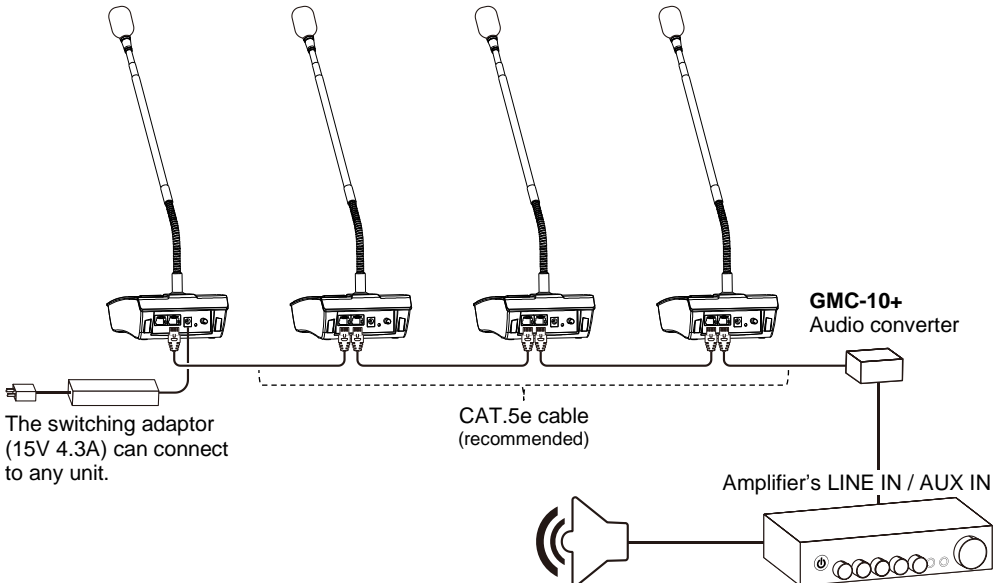


- For best voice pickup sensitivity from the mouth to the microphone.
- When feedback occurs because of the installing environment, the gain level adjustment can reduce its impact.
- For an ideal acoustic quality, either lower the gain level or the volume of the amplifier.

GM-243 System Connection

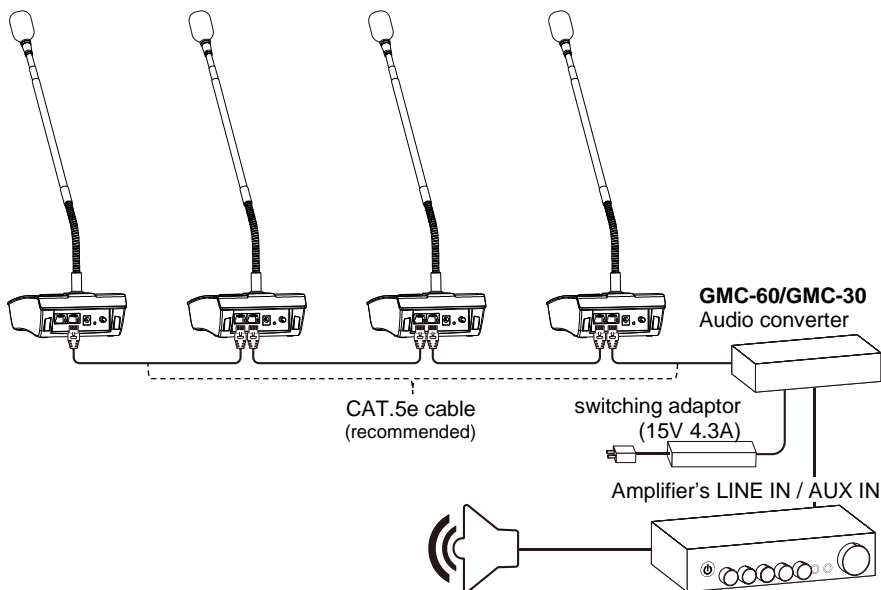
1. System capacity of no more than 10 units with **GMC-10+** audio converter.

※ Please refer to **GMC-10+** instruction manual for more detail.



GM-243 Audio Linked Telescopic Gooseneck Microphone

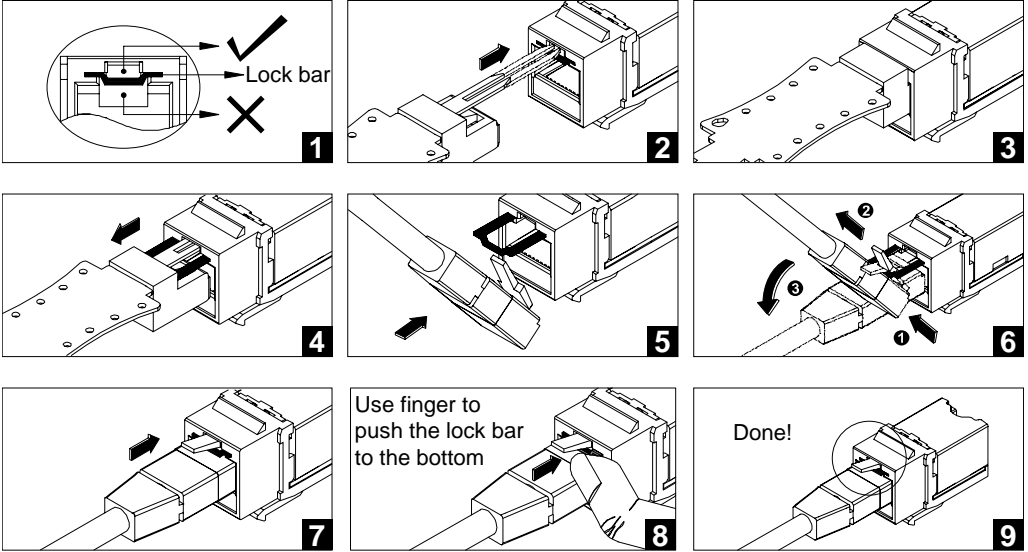
2. System capacity more than 10 units with **GMC-60 / GMC-30** audio converter.
※ Please refer to **GMC-60 / GMC-30** instruction manual for more detail.



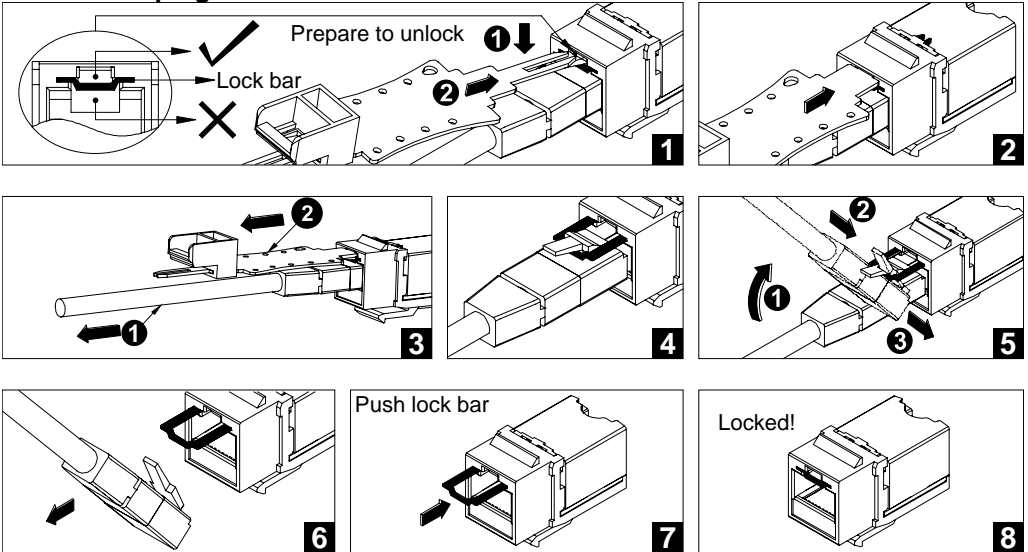
IMPORTANT

1. DO NOT connect to the power during installation and ensure that all RJ45 cable connectors are of correct pinout wiring.
2. DO NOT turn on the power before the installation is finished.
3. The network cable Cat.5e / Cat.6 UTP has to meet TIA/EIA-568-B.2 standards with copper wires of 24AWG-1/0.49A*4P (CM/UL).
4. To achieve best performance and stable functionality, it's recommended to use standard CHIAYO CAT.5e network cables which are available in 2M, 5M and 10M length.
5. The chairman unit **GM-243C** can be located anywhere in the loop.
6. Each RJ45 jack of the audio converter can only connect to the first or last unit of a **GM-243** series.
7. This conference system may consist of up to 120 units with max two chairman units **GM-243C**.
8. To prevent feedback noise, please adjust the GAIN on the microphone and the volume on the amplifier before operating the conference system.

Insert the plug



Pull out the plug



CHIAYO ELECTRONICS CO., LTD.

Http://www.chiayo.com.tw | Email: sales@chiayo.com.tw
Office: 30, Lane 27, Section 4, Jen-Ai Road, Taipei 10685, Taiwan
Tel: 886-2-27415741 | Fax: 886-2-27525242
Factory: 88, Chung-Hsiao Street 2, Chiayi 60080, Taiwan
Tel: 886-5-2711000 | Fax: 886-5-5767611

